



Strategies to Help Newcomer Families Navigate School



Welcome!

Meet Your **Presenters**



Rebecca Honig

Chief Content and Curriculum Officer
ParentPowered



America Lopez

Community Health Worker
Volunteers in Medicine



GOALS



You'll come away
with:



- A greater understanding of the **strengths, needs,** and **lived experiences** of families who are newcomers to the U.S.
- **Strategies to support** families as they transition to school in the U.S.
- Effective ways to **foster supportive communities** for new families
- Ideas to help **build and strengthen the capacity of families to support their children's education** and become leaders and advocates for their families



CHAPTER 1: Starting School





The **parents** want the child in the school. The **school** wants the **child** in the school, the **child** wants to be in school.

How can we make this easier?



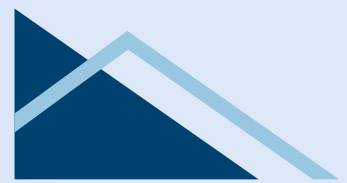
KEY TAKEAWAYS

Informal Family Engagement moments are happening all the time.

- These moments are happening where **trust is in place.**
- Look for ways to better **support these moments.**
 - **Recognize** the community members, the community leaders.
 - **Provide resources** to support them in doing this critical work.



EXAMPLES OF SHAREABLES



**Welcome to Muddy Brooke Elementary.
We are so excited to have your family join
our school community.**

The first step is registering your child for school.

To start that process, call our family liaison, Susan at 413-339-4380.

When she picks up, let her know, "I need to register my child for school." She'll help you through the whole process. And, we'll make sure you have language support. We look forward to hearing from you!



**Bienvenidos a Muddy Brook Elementary.
Estamos muy complacidos de que su
familia se una a nuestra comunidad escolar.**

El primer paso es registrar a su hijo para la escuela.

Para iniciar ese proceso, llame a nuestro enlace de familias, Susan al 413-339-4380.

Cuando conteste, comuníquele: "Necesito inscribir a mi hijo en la escuela". Ella le ayudará en todo el proceso. Y nos aseguraremos de que tenga apoyo con el idioma. Quedamos a su disposición.



KEY TAKEAWAYS

Ask: What can we do to become a trusted source, a more familiar presence in our community at large?

- Attend events, festivals, etc.
- Understand who's holding the relationship; partner up.
 - Offer space for gatherings.



KEY TAKEAWAYS

When you do meet with families always assume one thing:

Families want to be engaged.

So how can you best support that engagement? Learn more about where families are coming from.

Ask yourself:



- What language do they speak?
- What is their background?
- What is their educational background?
- How does the family perceive and value education?
- What are their hopes and dreams for their child?

KEY TAKEAWAYS

ALWAYS OFFER LANGUAGE SUPPORT



If YOU can't, look for
who in your
community CAN.





CHAPTER 2: Advocacy



KEY TAKEAWAYS

Make it clear that families can **ALWAYS** voice concerns and advocate.

What can you say and do to really communicate this?

- Clear statements
- Places to share voices
- Lots of listening



KEY TAKEAWAYS

Make sure support is ongoing!

Ask yourself

- Is this new information?
- A new routine?
- A new transition?
- What can I do to support all families around this?



➔ Ongoing language support is **KEY.**

3

CHAPTER 3: Part-Time Immigrant Liaison



4

CHAPTER 4: Points of Pride



ELPAC

At every meeting ask about:



- What's working?
- What's not working?
- What are things you see that are changing?
- What are things that could work a bit better?
- Who can you reach out to with questions?



TEACHER MEETING With Families



MORE ACCESSIBLE Registration Process



INDUCTION MANUAL

For EL Families

What does it include?

- A welcome
- A statement about our commitment to never ask about immigration status .
- A number to call to register.
- A list of required documents for school registration:
 - Birth certificate
 - Copy of medical exam and immunization records
 - Proof of residency
 - Last school diploma

#to call for assistance with documents



Charts detailing grade and age equivalents:

The typical age for grade level enrollment and expected progress: does not reflect students with individualized education plans (IEP)

Grade:	K	1	2	3	4	5	6	7	8	9	10	11	12
Age:	5	6	7	8	9	10	11	12	13	14	15	16	17

** For kindergarten students: the student must be five years old by (insert cutoff date here) of the year of enrollment.*

Maximum age ** for enrollment in structured grade levels – does not reflect students with individualized education plans.

Grade Period	ES Grades K-5	MS Grades 6-8	HS Grades 8-12
Maximum Age	12	15	19

*** The maximum age is for enrollment at the highest level within the period. Exceptions can be made on a case-by-case basis.*

NOTE: The school calendar in the United States is September through June. If the student has a different school calendar in his/her country, enrollment will be according to the last grade completed. Promotion to the next grade level will occur at the end of the U.S. school year.

INDUCTION MANUAL For EL Families

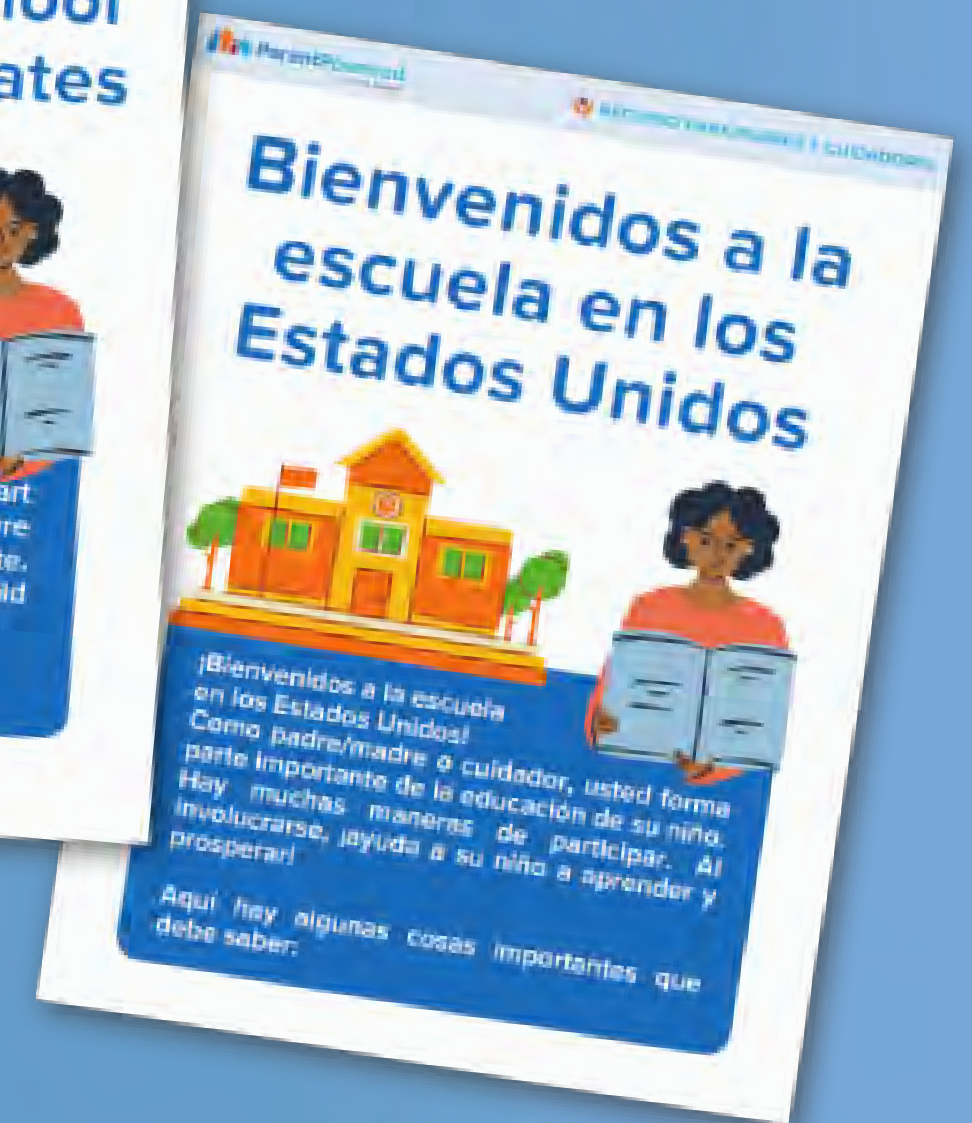


- A name and number to call for help once students are enrolled.
- A name and number for EL support
- Brief descriptions of:
 - Attendance policies
 - Legal implications of not attending school in the United States
 - Grading
 - Progress reports, report cards, and school conferences
 - Promotion
 - Schoolwork make-up policy
 - Extracurricular activities
 - Translation and interpretation services
 - Nutrition
 - Cellphone use
 - Bus behavior
 - Bullying



Take Away

The link to download this resource *Welcome to School in the United States* is in chat! Plus, keep an eye on your email inbox.



Family Engagement that Grows with the Child



From Captain

To Copilot



Birth through 12th Grade

Interested in learning more about
ParentPowered's evidence-based
family engagement program
for birth through grade 12?



LET'S TALK!



http://

bit.ly/parentpowered



DATO: A los niños les emociona aprender sobre sí mismos. En cuanto más aprenden, más autoestima y confianza tienen para progresar en la escuela.

CONSEJO: En la mañana, mírense en el espejo y túrnense para nombrar las cualidades de su hija: Tienes los ojos de color café, eres amable, inteligente y rápida.

CRECIMIENTO: Siga ayudando a su hijo a conocerse! Mientras se miran en el espejo, compartan cosas sobre su familia, por ejemplo dónde viven y sus costumbres.